



St Paul's Presbyterian Church

"Partners in God's Mission of Love"

NEWSLETTER – March 2019



"This do in remembrance of Me."

Services of Holy Communion

Sunday, 10 March 2019 at 9.15, 10.30am and 7pm services

Please accept this as a personal invitation to be present.



Contents

From the Minister's Desk	1
Editorial.....	3
Bruce McConnochie	4
Reflections, January 2019.....	5
Anniversary of NZCCSS & UN World Day of Social Justice	7
Landscaping of Church Grounds – Update	8
Art Deco Weekend	10
Christian World Service Christmas Appeal Report for St Paul's Presbyterian, Napier	11
Noah's Ark: Everything I need to know, I learned from Noah's Ark	12
Helping People.....	13
Environmentally Speaking.....	13
Sustaining Hawke's Bay Trust - Specialist Recycling Project ...	14
The Stitch In Time.....	15
World day of prayer.....	15
HB Presbyterial Preliminary Notice	15
500 Card Group.....	16
Directory Changes	16
Parish Register	16
Regular Events	17
Upcoming Events	17
Contact Us.....	18

From the Minister's Desk

Partners in God's Mission of Love

Reverend Sally Carter



Watching the waves

The other day I heard that there was a big swell in the ocean for the East coast, so on our way back from an appointment, Frank and I pulled into one of the beach car parks near Awatoto. Just a couple of metres from the carpark was a wonderful log, the perfect height and width for us to sit on. The tide was turning, the sea and sky were beautiful and the waves were spectacular. Occasionally, we would have to lift our feet off the beach while a sixth or seventh wave came a bit too close to our log.

After watching for a while, I said 'I guess it's time we got going.' Which we did. As we walked up the path to the carpark I turned around, only to see our log absolutely covered in water from the very next wave.

I wonder what your response to this story is?

We laughed out loud at our good fortune. The timing. The sense that God's sense of humour was at least kindly. And what would have happened had we not acted on the prompting to get going.

Later that day at the Fireside picnic, we watched many other people enjoying the effects of the swell – surfers, paddle boarders, sailors, kayakers, all revelling in the warmth of the summer sun, and the swell of the waves.

As I reflected on the story over the next few days, I noticed how often Jesus and his disciples are at the beach or in or on the water. There is something that touches into the depths of our humanity when we experience the power and mystery of the sea. I thought about Peter when Jesus calls to him over the sea. Peter gets out

of the boat and takes a few fearless steps across the sea before he is reminded of the impossibility of what he is doing and sinks, spluttering, into the water, calling out to Jesus to rescue him.

Being on the edge of fear is sometimes exhilarating, sometimes terrifying. Many of us would not have stepped out of the boat to answer Jesus' call. But just think how wonderful those few steps on the water would have been.

All blessings,

Sally



Editorial

Rae Wildbore & Kerry Marshall

Welcome to the fourth issue of our quarterly newsletter. Once again, we hope that you find the collection of articles interesting and newsworthy. Our contributors are to be thanked for their thoughtful words as we know our readers appreciate reading them.

One of the important articles for you to read in this edition is the update about the landscaping project. In the media release Sally, our Minister, noted the importance of this major project for the Parish, one that is long overdue for our inner-city church grounds. We know that you have endured muddy, uneven ground for a long time as the design has been sorted out to provide a welcoming, user friendly area so we are looking forward to enjoying the new layout.

As the publication of the quarterly newsletter coincides with our quarterly communion invitation, we hope you will be able to join us for that service in March.

We've appreciated the help the office has had in keeping the calendar of events for the three months after the newsletter comes out up-to-date. Please let the office know of any new happenings organised after the newsletter has gone to print so that the office can include them in the weekly bulletin and on the parish website calendar. For our readers, keep an eye on the bulletin and website so you can keep up-to-date.

The closing dates for the monthly calendar updates will be Monday, 25 March and 29 April. For production of the next quarterly newsletter to be published at the end of May we will need you to get all contributions to the office by Monday, 20 May please.

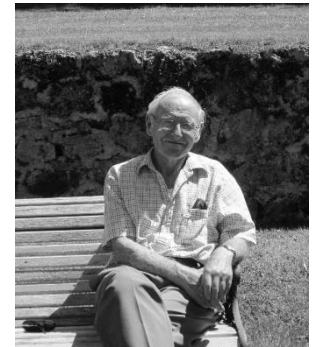
Please send details of your events to the office by these dates. Of course, you'll still be able to have notices in the weekly bulletin if you get them into the office by Thursday each week.

Enjoy looking through this newsletter (use it), talk to and thank the contributors (feedback) and think about your contributions (improve it).

**Bruce McConnochie (13 August 1927
- 16 December 2018)**

Pam Clare

Bruce was a treasure at the heart of the life of our congregation where his understanding, his kindness, his wisdom and his quiet leadership were deeply appreciated by the people of St Paul's. Above all, he was a man of great integrity, trustworthy and honest, and how he presented was how he was - with his family and friends, in his working life, and as a member of our congregation.



He was a life-long member of St Paul's, his journey starting with his baptism in 1928. He held many roles in church life. He was a bible class leader and a member of the choir and his faith and wisdom were recognised when he was ordained as an elder in 1960. He actively served in this role for 50 years, 30 of these, from 1973, as our Session Clerk. In 2010, loved and respected for his long and faithful service, he was made an Elder Emeritus.

For many years he was the parish archivist with a deep knowledge of the history of St Paul's. He had a love of music and of studying the Bible, and his interest in people with the ability to listen and to encourage others was greatly valued.

Bruce was the loved and loving husband for over 62 years of Jill, and together they have enriched the life of St Paul's

immeasurably. He was a much-loved father of Ross, Alison, Graeme, Donald, and Janet, and their families.

Yet as the totara falls in the forest
and seedlings flourish in its shelter
so we give thanks that Bruce's life
has had significance for so many people.
(Extract from a prayer at Bruce's funeral service)

Reflections, January 2019

Donovan Lind, Presbytery Central
Moderator



Recently I re-read Richard Foster's "Celebration of Discipline" for the first time in nearly 40 years; finding his discussion of the twelve spiritual disciplines (there may be more) to be as fresh and vital as when I first read it during my student days.

Foster classifies the disciplines under three headings: inward (meditation, prayer, fasting, study); outward (simplicity, solitude, submission, service); and corporate (confession, worship, guidance, celebration). He devotes a chapter to each discipline, and the book lends itself as a personal devotional guide as well as for group study.

Perhaps we'll come back to CoD later in the year; at this stage let's talk briefly about the discipline of **worship**:

To worship is to experience reality... to know, to feel, to experience the resurrected Christ in the midst of the gathered community. It is a breaking into the Shekinah of God, or better yet, being invaded by the Shekinah of God.

Richard Foster, Celebration of Discipline

Shekinah is a Hebrew word that denotes the immediate presence of God, rather than something that is abstract or aloof.

Worship is our response to God who is always reaching out—through others, through the circumstances of our daily lives, through the Scriptures. God is making, as Foster expresses it,

“overtures of love” towards us. It’s also meant to be our priority; after worship comes service and activity, not the other way around.

I don’t know about you, but I have this tendency to get enmeshed in stuff (matters to do with home, family, work, Presbytery, whatever), offering God and others my expertise, trying to make things work the way that I think they should; then being reminded (yet again) that God is sovereign, requiring worship and obedience, not my advice on how to fix things or people.

Stilling ourselves before God in worship is the necessary precursor to everything else, an antidote to our tendency to get ahead of God (and others) and impose our solutions on the world’s problems. We do well to remember this:

“For my thoughts are not your thoughts, neither are your ways my ways,” declares the Lord. As the heavens are higher than the earth, so are my ways higher than your ways and my thoughts than your thoughts.”

Isaiah 55:8,9 (NIV)

As we begin another year of our journey together as God’s people, let’s ask God for the grace to rediscover the centrality of worship, the desire to still ourselves in worship, and in doing so, that the Holy Spirit renews our hearts and minds, making us more like the one whom we seek to serve.

Let the message of Christ dwell among you richly as you teach and admonish one another with all wisdom through psalms, hymns, and songs from the Spirit, singing to God with gratitude in your hearts. And whatever you do, whether in word or deed, do it all in the name of the Lord Jesus, giving thanks to God the Father through him.”

Colossians 3:16-17

Questions for reflection

- What can I do to cultivate a worshipful attitude throughout each day, not just during those times of personal withdrawal and prayer, or when I come together with others?

- What things help me draw near to God in worship? What things hinder me from doing so? What then might I do about those things?

Anniversary of NZCCSS & UN World Day of Social Justice

Submitted by Kerry Marshall

On 20 February, the NZCCSS marked this anniversary on the United Nations World Day of Social Justice, with a vigil at St Paul's Cathedral in Wellington. The following extract is taken from a message from Very Rev Ray Coster, White Ribbon Ambassador, to the Presbyterian Church.

This year marks the 50th anniversary of the New Zealand Council of Christian Social Services (NZCCSS) who work tirelessly for a just and compassionate society in Aotearoa New Zealand. On the International day of social justice, we must also acknowledge that there is still much work to do to protect the thousands of Kiwi families affected by family violence, one of the biggest social issues facing New Zealanders today.

As a White Ribbon Ambassador, I am part of a network of Kiwis – like NZCCSS – that are working hard to be agents for change in our communities. I am bringing the message to our Church and those in the wider community that family violence is not OK. I encourage you to keep the children and women, and sometimes men, affected by family violence in your prayers this 20 February, United Nations World Day of Social Justice.

For 50 years, NZCCSS has been an agent for change through its research and tireless work advocating for better government policies, more funding and better living conditions for those on the margins of society. I'd like to commend the current NZCCSS team and all of those who came before, for their work which has no doubt had a positive impact on the wellbeing of Kiwi children, families, older Kiwis, those living in poverty and others who often don't have a voice.

More details about NZCCSS anniversary events, which will be held throughout 2019, will be available on their website, and I invite all Presbyterian and Uniting parishes to get alongside NZCCSS and celebrate this milestone.

Landscaping of Church Grounds – Update

The Landscaping Committee

We were expecting work on the grounds to start on Monday, 18 February, but unfortunately this has been delayed to the following week Monday the 25th.



As you will know, there are three stages to the project: the wall replacement followed by the concreting of the parking area and finishing with the gardens (the soft landscaping). This update gives you an outline of what to expect. We would appreciate your patience and co-operation while this very important project is being undertaken.

Stage 1 – the wall

The removal of the old wall and construction of the new wall is the first stage which begins on **Monday, 25 February**. While this work is happening:

- The office will be open
- You will be able to access the church buildings
- There will be no parking available in the church grounds at any time
- There will be construction noise, trucks and workers in and around the grounds – **please be careful and observe all signs and instructions**

Stage 2 – the concrete work

This is the major part of the project expected to begin on **Monday, 11 March** and lasting for three weeks. The first step is the removal of the existing concrete and shingle area, followed by establishing levels and laying reinforcing, then finally the

new concrete is poured. Why do we have to shut? We need to maintain clear access – entry and exit – from the premises and the work in the grounds around the main doors will prevent this. Also, from time-to-time the diggers and trucks and concreting will create noise and dust which will be a nuisance and we can't forecast exactly when this will happen. So, you're better to plan to use an alternative venue in this time.

- **During this phase the church, including the office, will be shut**
- Our Minister and the office staff will be available during this time and you can contact them by phone or email
- If your group normally uses the church, you will need to find alternative places for your activities – the church office can help you with this
- During this time our services will be held in Asher Hall.
- You will be unable to park or access the church grounds during this time – even if the area looks finished and empty, we have to allow time for the concrete to cure properly so **please respect all signage at all times.**

Stage 3 – the gardens (soft landscaping)

This stage of the project, starting on **1 April**, is when garden areas are being dug out, edgings laid and new soil brought in along with the plants. During these two weeks the same conditions apply as for the first stage, namely:

- The office will be open
- You will be able to access the church buildings
- There will only be no parking available in the church grounds at any time
- There will be construction noise, trucks and workers in and around the grounds – please be careful and observe all signs and instructions

Thank you

- One thing we can't control is the weather so if any delays occur this plan may have to change – we will all need to be flexible.
- We know you will be as excited about this project as we are and will help us make the weeks while it is happening go as smoothly as possible.
- Things won't be the same so be patient, plan ahead, ask someone if you have questions and look forward to our new church gardens.

Art Deco Weekend

Kerry Marshall

The St Paul's fete has become a feature of Art Deco Saturday in Napier thanks to the generosity of our parishioners. While there has been a change from the multitude of stalls as the focus, the growing popularity of the Devonshire Teas shows that this is an ideal way to contribute to our busy city's activities.

The weekend is a busy time for the Napier Pipe Band with band members staging a very enjoyable concert in St Paul's Church featuring the popular music of "Highland Cathedral". The band has a number of young pipers and drummers who enjoy putting together and presenting arrangements of the Band's music and the concert featured their skills admirably. The Band also plays in the vintage car parade, an exhausting task for those pipers who are dressed in the full military uniform.



Our thanks to all who organised things, helped set up stalls and tables, baked and supplied food and of course all those who on the day served with big smiley faces and warm greetings. Well done.

Christian World Service Christmas Appeal Report for St Paul's Presbyterian, Napier

Gillian Southey

CWS is grateful for your generous contributions to the 2018 Christmas Appeal. Thank you for joining the lifeline this Christmas. Grants from the Appeal are made throughout the year to fit in with the planning needs of partners.

CWS has sent grants to four partners already. In Sri Lanka, Devasarana Development Centre is promoting understanding between Sinhala and Tamils, especially in the Mannar District, badly affected by the country's civil war. Using their knowledge and skills of organic farming, they are supporting Tamils to raise poultry and calves, set up nurseries and expand gardens, and set up small businesses in the village to which they have returned with very little. Devasarana is planning an international children's day for Sinhala and Tamil children and discussion groups between adults.

In South Sudan, the annual grant to Maridi Service Agency will contribute to their programme supporting two preschools, a high school, scholarships so girls can attend high school, a radio station (MaridiFM), an HIV/AIDS testing clinic, and their wide-ranging education programme. Funds raised through the ongoing emergency appeal for South Sudan fund their small business programme for mothers displaced by the civil war.

In Uganda, the Centre for Community Solidarity is excited to have funds for 70 more rainwater tanks for families of HIV and AIDS orphans. The tanks are at the centre of their work that includes education and support for better health and improved income for the families.

The Women's Centre in Sri Lanka provides services and support to workers in the country's Free Trade Zones. In the centres they provide access to computers and advice. One centre includes a day care centre for pre-schoolers. They work for better pay and

improved conditions in the factories where they work and the boarding houses where they live. Particular attention has been given to addressing discrimination against Tamil workers. The women participate in campaigns to end sexual harassment and violence. They actively seek opportunities to encourage good relationships between Sinhala and Tamil workers in the factories and throughout the country.

Noah's Ark: Everything I need to know, I learned from Noah's Ark

Submitted by Marion Fell

One: Don't miss the boat.

Two: Remember that we are all in the same boat!

Three: Plan ahead. It wasn't raining when Noah built the Ark.

Four: Stay fit. When you're 80 years old, someone may ask you to do something really big.

Five: Don't listen to critics; just get on with the job that needs to be done.

Six: Build your future on high ground.

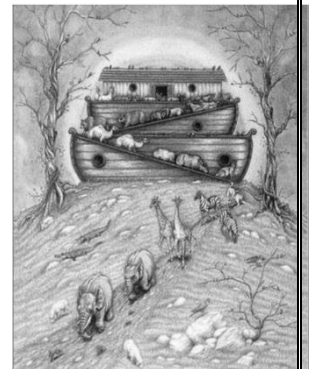
Seven: For safety's sake, travel in pairs.

Eight: Speed isn't always an advantage. The snails were on board with the cheetahs.

Nine: When you're stressed, float awhile.

Ten: Remember, the Ark was built by amateurs; the Titanic by professionals.

Eleven: No matter the storm, there's always a rainbow waiting.



Helping People

Kerry Marshall

Recently Penny and I have been 'decluttering'. Goodness knows where words like this come from but it's what we've been doing - going through our garage and cupboards getting rid of stuff. The question is what to do with the things we no-longer need - recycle, reuse or dump. There are many options for giving things a second life and we've taken loads to the Presbyterian Support op-shop.

Another option is Christian Love Link which is a team of volunteers from many different Hawke's Bay churches who have people referred to them from many different agencies.

Last year Christian Love Link helped 1,094 households including 2,080 children. The volunteers worked more than 500 hours in the office, sorting donated items or delivering to Hawke's Bay families. Over 700 people made donations which enabled Christian Love Link to give out almost 10,000 items.

They need quality beds, furniture, crockery, cutlery, pots and pans, cooking utensils, blankets, duvets and duvet covers, pillows, towels, face cloths and tea towels. They are happy to pick up, even if you only have one or two items they will be gratefully received. Just phone them on 06 843 9803.

Environmentally Speaking

Isabel Morgan

In 1998, the World population was six billion. In the following 20 years it has increased by 1.7 billion. Growth is exponential, so where will we be at the end of the 20 years? Does the growth in population put more strain on the world's resources? Undoubtedly it does. More people need more land, more water, more electricity, more timber and so on. This all brings huge social pressures, but it also brings environmental pressure.

Here's a huge environmental problem – a huge river of soil is flowing into the sea from the land and is headed for the Great Barrier Reef.

Sustaining Hawke's Bay Trust - Specialist Recycling Project

Tony Smith, Environment Centre Hawke's Bay

This cooperation has been running for almost two years now having kicked off in April 2017. During that time, we have recycled 16 bucketloads of material with a total weight of 53.4 kilograms, all of which would otherwise have gone to the landfill site. We do not have a detailed breakdown, but it is likely that the majority of the weight is in the form of batteries, while the bulk of the volume would have been oral care products. The Environment Centre has earned points as a result of some of the items processed, and while they have a very modest value, they are redeemed from time-to-time for a range of services, which helps the viability of the centre.



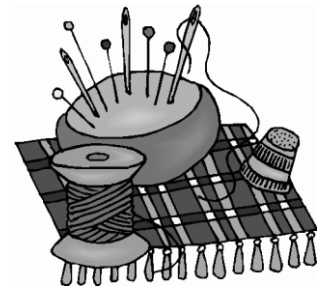
One very pleasing feature has been the quality of the items collected. They have generally been clean and dry, with very little “contamination” in the form of items that cannot be processed. As a reminder, the items that we cannot use, so we have to remove and put into our rubbish bins, include: plastic tubes for any products other than toothpaste; tinfoil; tablets for drying hearing aids; soft plastic bags that are not “Glad” brand, and anything made from polystyrene.

We have recently extended our range of target items to include metal bottle tops. This covers both the fluted “crown” caps traditionally used on pressurised drinks such as beer, cider, and soft drinks, and the softer aluminium screw caps and foil covers that are the norm nowadays on wine bottles. Sadly, we cannot take corks, but there are very few of those still used.

Thank you for your support to-date. We look forward to continuing to recycle materials that would otherwise find their way into landfill.

The Stitch In Time

Dorothy Finlayson (on behalf of The Stitch in Time group)



As mentioned in the December Newsletter, the leadership of this group is being talked about. The group was established in April 2015 basically for women to get together, stitch and generally have fun; however, times change and it is now time for

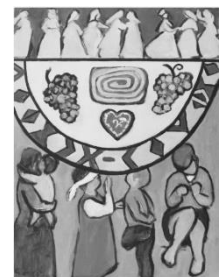
- New leadership
 - New activities
 - New start

Watch this space!

World day of prayer

Jill McConnochie

This long-standing event is led by lay-women around the world. Locally, leadership of the service rotates amongst churches of various denominations. This year, St Paul's will host the event on Friday, 1 March at 10am. The service is entitled "Come – everything is ready" and has been prepared by women of Slovenia. We would be pleased to have you join us.



HB Presbyterial Preliminary Notice

Isabel Morgan

Due to circumstances which we cannot change, the March meeting of Presbyterial, due to be held at St Paul's on 7 March, will now be held at St Andrew's Hastings, on 21 March at 10am.

500 Card Group

Anne Burden

There will be no card playing on Wednesdays while the church is closed. The group has been invited to join the Atawhai Card Group. The group will commence on Monday, 4 March at 1:30pm in St Andrew's Hall, Atawhai until the church is available.

Directory Changes

Janice Donghi, has a new address: Masonic Trust Rest Home, Room 28, 15 Devonshire Place Taradale

Parish Register

Rae Wildbore

Funerals

Bruce McConnochie died 16 December 2018

Joyce Mabel Buckley (nee Grant) died 22 January 2019

Brian Hugh Blair died 31 January 2019

Isabella (Isa) Mailer Frost (Nee Whitelaw) died 9 February 2019

We extend our loving sympathy to the families of these members.

Regular Events

- **Sunday Services:** 9:15am and 10:30am services each Sunday and 7pm evening service on the 2nd Sunday of the month (NB: 9:15am service not held on statutory holidays). Services will be held in Asher Hall during the landscaping project.
- **Stitch in Time** 1st and 3rd Mondays from 1:30-4pm in the church lounge (April – October)
- **Fireside group** meet on the 2nd Tuesday each month at 7.30pm in the lounge (February to November)
- **Cards 500** 1st, 2nd, 3rd and 5th Wednesdays at 1.30pm (see article re changes during landscaping project)
- **Afternoon Fellowship** 4th Wednesday at 2pm
- **Lunch group** meets monthly on the 1st Friday at noon for food and fellowship at various venues around the city
- **Choir** meets each Sunday at 9.30am in the church
- **Jitterbugs Pre-school Music and Movement** each Tuesday from 9am (during the school term)

Upcoming Events

	March
1 st	World Day of Prayer 10am
6 th	Ash Wednesday service at the Cathedral 7pm
10 th	Communion services 9:15am, 10:30am, 7pm
13 th	Lent Service @ St Patrick's 7pm
20 th	Lent Service @ Trinity 7pm
27 th	Lent Service @ St Thomas More 7pm
31 st	Fifth Sunday Breakfast at 10:30am
	April
3 rd	Lent service @ St Andrews West Shore 7pm
10 th	Lent Service @ St Pauls 7pm
14 th	Palm Sunday services 9:15am, 10:30am, 7pm
19 th	Good Friday (TBA)
21 st	Easter Service & Communion (TBA)
	May
19 th	Taize Candlelight Service 7pm

Contact Us

Phone: 06 835 5359
email: stpaulsnapier@gmail.com
Street Address: 89 Tennyson Street, Napier
Postal Address: P O Box 310, Napier, 4140
Website: www.stpaulsnapier.org.nz

This newsletter was delivered by

.....

Phone

Please feel free to phone me with any questions or if you would like a visit.